

TRANSITION ALT 14 000  
TRANSITION LVL FL 140

JEJU APP	121.2
	124.05
JEJU TWR	118.2
	118.55

RNAV DOTOL 2P, RNAV UPGOS 1P  
RNAV TAMNA 2P, RNAV TOSAN 2P  
RNAV SOSDO 2P, RNAV LIMDI 1P

AIP AMDT 5/23

JEJU/Jeju Intl(RKPC)

RWY 07

RNAV DOTOL 2P, RNAV UPPOS 1P

## AERONAUTICAL DATA TABULATION

Standard Instrument Arrival Procedure Coding Tables

RNAV DOTOL 2P										
Serial Number	Path Descriptor	Waypoint Identifier	Fly-over	Course/Track °M(T)	Distance (NM)	Turn direction	Altitude (ft)	Speed (kt)	Coordinates	VPA/TCH
001	IF	DOTOL	-	-	-	-	-	-	34°15'15.4"N 126°36'36.6"E	-
002	TF	CHUJA	-	193(184.9)	15.5	-	-	-	33°59'47.3"N 126°35'00.2"E	-
003	TF	PC726	-	226(219.0)	6.7	-	-9 000	-	33°54'32.2"N 126°29'54.4"E	-
004	TF	BIROM	-	226(218.9)	8.9	-	@7 000	-	33°47'33.9"N 126°23'09.8"E	-
005	TF	MANBA	-	226(218.9)	5.0	-	-	@220	33°43'39.9"N 126°19'24.0"E	-
006	TF	PC621	-	287(279.1)	5.0	-	-	@220	33°44'27.4"N 126°13'28.9"E	-
007	TF	PC622	-	270(262.2)	5.0	-	-	@220	33°43'46.4"N 126°07'32.6"E	-
008	TF	PC623	-	253(245.2)	5.0	-	-	@220	33°41'40.2"N 126°02'06.2"E	-
009	TF	PC624	-	236(228.2)	5.0	-	-	@220	33°38'19.9"N 125°57'38.2"E	-
010	TF	PC625	-	219(211.3)	5.0	-	-	@220	33°34'03.1"N 125°54'31.8"E	-
011	TF	PC626	-	202(194.3)	5.0	-	-	@220	33°29'11.9"N 125°53'02.9"E	-
012	TF	DAKPI	-	185(177.4)	5.0	-	-	@220	33°24'11.7"N 125°53'19.1"E	-
013	TF	PC628	-	168(160.5)	5.0	-	-	@220	33°19'28.4"N 125°55'18.5"E	-
014	TF	PIWIK	-	151(143.6)	5.0	-	@9 000	@220	33°15'26.4"N 125°58'50.7"E	-
015	TF	YUMIN	-	053(045.2)	17.0	-	+4 000	@210	33°27'25.7"N 126°13'15.5"E	-

RNAV UPPOS 1P										
Serial Number	Path Descriptor	Waypoint Identifier	Fly-over	Course/Track °M(T)	Distance (NM)	Turn direction	Altitude (ft)	Speed (kt)	Coordinates	VPA/TCH
001	IF	UPPOS	-	-	-	-	-	-	33°57'33.3"N 127°19'53.0"E	-
002	TF	PC728	-	265(257.3)	12.0	-	-	-	33°54'53.8"N 127°05'49.0"E	-
003	TF	PC721	-	278(270.1)	15.5	-	-	-	33°54'53.3"N 126°47'09.7"E	-
004	TF	PC722	-	257(250.0)	8.3	-	+13 000	-	33°52'02.9"N 126°37'48.9"E	-
005	TF	BIROM	-	257(249.9)	13.0	-	+10 000	-	33°47'33.9"N 126°23'09.8"E	-
006	TF	MANBA	-	226(218.9)	5.0	-	@9 000	@220	33°43'39.9"N 126°19'24.0"E	-
007	TF	PC621	-	287(279.1)	5.0	-	-	@220	33°44'27.4"N 126°13'28.9"E	-
008	TF	PC622	-	270(262.2)	5.0	-	-	@220	33°43'46.4"N 126°07'32.6"E	-
009	TF	PC623	-	253(245.2)	5.0	-	-	@220	33°41'40.2"N 126°02'06.2"E	-
010	TF	PC624	-	236(228.2)	5.0	-	-	@220	33°38'19.9"N 125°57'38.2"E	-
011	TF	PC625	-	219(211.3)	5.0	-	-	@220	33°34'03.1"N 125°54'31.8"E	-
012	TF	PC626	-	202(194.3)	5.0	-	-	@220	33°29'11.9"N 125°53'02.9"E	-
013	TF	DAKPI	-	185(177.4)	5.0	-	-	@220	33°24'11.7"N 125°53'19.1"E	-
014	TF	PC628	-	168(160.5)	5.0	-	-	@220	33°19'28.4"N 125°55'18.5"E	-
015	TF	PIWIK	-	151(143.6)	5.0	-	@9 000	@220	33°15'26.4"N 125°58'50.7"E	-
016	TF	YUMIN	-	053(045.2)	17.0	-	+4 000	@210	33°27'25.7"N 126°13'15.5"E	-

JEJU/Jeju Intl(RKPC)  
RWY 07

RNAV TAMNA 2P, RNAV TOSAN 2P

## AERONAUTICAL DATA TABULATION

## Standard Instrument Arrival Procedure Coding Tables

## RNAV TAMNA 2P

Serial Number	Path Descriptor	Waypoint Identifier	Fly-over	Course/Track °M/(°T)	Distance (NM)	Turn direction	Altitude (ft)	Speed (kt)	Coordinates	Navigation specification	Remarks
001	IF	TAMNA	-	-	-	-	-	-	33°28'15.5"N 127°19'53.0"E	RNAV 1	-
002	TF	CJU	-	269(261.9)	35.9	-	+12 000	-	33°23'04.6"N 126°37'26.8"E	RNAV 1	-
003	TF	PC723	-	340(332.9)	14.2	-	+11 000	-	33°35'44.3"N 126°29'41.9"E	RNAV 1	-
004	TF	PC724	-	340(332.8)	8.0	-	+10 000	-	33°42'52.0"N 126°25'19.1"E	RNAV 1	-
005	TF	MANBA	-	287(279.2)	5.0	-	@9 000	@220	33°43'39.9"N 126°19'24.0"E	RNAV 1	Bank angle 25°
006	TF	PC621	-	287(279.1)	5.0	-	-	@220	33°44'27.4"N 126°13'28.9"E	RNAV 1	Bank angle 25°
007	TF	PC622	-	270(262.2)	5.0	-	-	@220	33°43'46.4"N 126°07'32.6"E	RNAV 1	Bank angle 25°
008	TF	PC623	-	253(245.2)	5.0	-	-	@220	33°41'40.2"N 126°02'06.2"E	RNAV 1	Bank angle 25°
009	TF	PC624	-	236(228.2)	5.0	-	-	@220	33°38'19.9"N 125°57'38.2"E	RNAV 1	Bank angle 25°
010	TF	PC625	-	219(211.3)	5.0	-	-	@220	33°34'03.1"N 125°54'31.8"E	RNAV 1	Bank angle 25°
011	TF	PC626	-	202(194.3)	5.0	-	-	@220	33°29'11.9"N 125°53'02.9"E	RNAV 1	Bank angle 25°
012	TF	DAKPI	-	185(177.4)	5.0	-	-	@220	33°24'11.7"N 125°53'19.1"E	RNAV 1	Bank angle 25°
013	TF	PC628	-	168(160.5)	5.0	-	-	@220	33°19'28.4"N 125°55'18.5"E	RNAV 1	Bank angle 25°
014	TF	PIMIK	-	151(143.6)	5.0	-	@9 000	@220	33°15'26.4"N 125°58'50.7"E	RNAV 1	Bank angle 25°
015	TF	YUMIN	-	053(045.2)	17.0	-	+4 000	@210	33°27'25.7"N 126°13'15.5"E	RNAV 1	IAF

## RNAV TOSAN 2P

Serial Number	Path Descriptor	Waypoint Identifier	Fly-over	Course/Track °M/(°T)	Distance (NM)	Turn direction	Altitude (ft)	Speed (kt)	Coordinates	Navigation specification	Remarks
001	IF	TOSAN	-	-	-	-	+FL 150	-	33°00'12.0"N 126°46'18.7"E	RNAV 1	-
002	TF	CJU	-	349(342.0)	24.0	-	+12 000	-	33°23'04.6"N 126°37'26.8"E	RNAV 1	-
003	TF	PC723	-	340(332.9)	14.2	-	+11 000	-	33°35'44.3"N 126°29'41.9"E	RNAV 1	-
004	TF	PC724	-	340(332.8)	8.0	-	+10 000	-	33°42'52.0"N 126°25'19.1"E	RNAV 1	-
005	TF	MANBA	-	287(279.2)	5.0	-	@9 000	@220	33°43'39.9"N 126°19'24.0"E	RNAV 1	Bank angle 25°
006	TF	PC621	-	287(279.1)	5.0	-	-	@220	33°44'27.4"N 126°13'28.9"E	RNAV 1	Bank angle 25°
007	TF	PC622	-	270(262.2)	5.0	-	-	@220	33°43'46.4"N 126°07'32.6"E	RNAV 1	Bank angle 25°
008	TF	PC623	-	253(245.2)	5.0	-	-	@220	33°41'40.2"N 126°02'06.2"E	RNAV 1	Bank angle 25°
009	TF	PC624	-	236(228.2)	5.0	-	-	@220	33°38'19.9"N 125°57'38.2"E	RNAV 1	Bank angle 25°
010	TF	PC625	-	219(211.3)	5.0	-	-	@220	33°34'03.1"N 125°54'31.8"E	RNAV 1	Bank angle 25°
011	TF	PC626	-	202(194.3)	5.0	-	-	@220	33°29'11.9"N 125°53'02.9"E	RNAV 1	Bank angle 25°
012	TF	DAKPI	-	185(177.4)	5.0	-	-	@220	33°24'11.7"N 125°53'19.1"E	RNAV 1	Bank angle 25°
013	TF	PC628	-	168(160.5)	5.0	-	-	@220	33°19'28.4"N 125°55'18.5"E	RNAV 1	Bank angle 25°
014	TF	PIMIK	-	151(143.6)	5.0	-	@9 000	@220	33°15'26.4"N 125°58'50.7"E	RNAV 1	Bank angle 25°
015	TF	YUMIN	-	053(045.2)	17.0	-	+4 000	@210	33°27'25.7"N 126°13'15.5"E	RNAV 1	IAF

JEJU/Jeju Intl(RKPC)  
RWY 07

RNAV SOSDO 2P, RNAV LIMDI 1P

## AERONAUTICAL DATA TABULATION

Standard Instrument Arrival Procedure Coding Tables

RNAV SOSDO 2P											
Serial Number	Path Descriptor	Waypoint Identifier	Fly-over	Course/Track °(M/T)	Distance (NM)	Turn direction	Altitude (ft)	Speed (kt)	Coordinates	Navigation specification	Remarks
001	IF	SOSDO	-	-	-	-	+FL 150	-	33°00'12.0"N 126°27'35.0"E	RNAV 1	-
002	TF	CJU	-	027(019.9)	24.3	-	+12 000	-	33°23'04.6"N 126°37'26.8"E	RNAV 1	-
003	TF	PC723	-	340(332.9)	14.2	-	+11 000	-	33°35'44.3"N 126°29'41.9"E	RNAV 1	-
004	TF	PC724	-	340(332.8)	8.0	-	+10 000	-	33°42'52.0"N 126°25'19.1"E	RNAV 1	-
005	TF	MANBA	-	287(279.2)	5.0	-	@9 000	@220	33°43'39.9"N 126°19'24.0"E	RNAV 1	Bank angle 25°
006	TF	PC621	-	287(279.1)	5.0	-	-	@220	33°44'27.4"N 126°13'28.9"E	RNAV 1	Bank angle 25°
007	TF	PC622	-	270(262.2)	5.0	-	-	@220	33°43'46.4"N 126°07'32.6"E	RNAV 1	Bank angle 25°
008	TF	PC623	-	253(245.2)	5.0	-	-	@220	33°41'40.2"N 126°02'06.2"E	RNAV 1	Bank angle 25°
009	TF	PC624	-	236(228.2)	5.0	-	-	@220	33°38'19.9"N 125°57'38.2"E	RNAV 1	Bank angle 25°
010	TF	PC625	-	219(211.3)	5.0	-	-	@220	33°34'03.1"N 125°54'31.8"E	RNAV 1	Bank angle 25°
011	TF	PC626	-	202(194.3)	5.0	-	-	@220	33°29'11.9"N 125°53'02.9"E	RNAV 1	Bank angle 25°
012	TF	DAKPI	-	185(177.4)	5.0	-	-	@220	33°24'11.7"N 125°53'19.1"E	RNAV 1	Bank angle 25°
013	TF	PC628	-	168(160.5)	5.0	-	-	@220	33°19'28.4"N 125°55'18.5"E	RNAV 1	Bank angle 25°
014	TF	PIMIK	-	151(143.6)	5.0	-	@9 000	@220	33°15'26.4"N 125°58'50.7"E	RNAV 1	Bank angle 25°
015	TF	YUMIN	-	053(045.2)	17.0	-	+4 000	@210	33°27'25.7"N 126°13'15.5"E	RNAV 1	IAF

RNAV LIMDI 1P											
Serial Number	Path Descriptor	Waypoint Identifier	Fly-over	Course/Track °(M/T)	Distance (NM)	Turn direction	Altitude (ft)	Speed (kt)	Coordinates	Navigation specification	Remarks
001	IF	LIMDI	-	-	-	-	-	-	33°33'13.3"N 125°49'53.0"E	RNAV 1	-
002	TF	PC727	-	120(112.7)	22.8	-	+FL 140	-	33°24'23.2"N 126°14'58.9"E	RNAV 1	-
003	TF	PC725	-	120(112.9)	12.7	-	-	-	33°19'25.2"N 126°28'56.9"E	RNAV 1	-
004	TF	CJU	-	070(062.8)	8.0	-	+11 000	-	33°23'04.6"N 126°37'26.8"E	RNAV 1	-
005	TF	PC723	-	340(332.9)	14.2	-	+11 000	-	33°35'44.3"N 126°29'41.9"E	RNAV 1	-
006	TF	PC724	-	340(332.8)	8.0	-	+10 000	-	33°42'52.0"N 126°25'19.1"E	RNAV 1	-
007	TF	MANBA	-	287(279.2)	5.0	-	@9 000	@220	33°43'39.9"N 126°19'24.0"E	RNAV 1	Bank angle 25°
008	TF	PC621	-	287(279.1)	5.0	-	-	@220	33°44'27.4"N 126°13'28.9"E	RNAV 1	Bank angle 25°
009	TF	PC622	-	270(262.2)	5.0	-	-	@220	33°43'46.4"N 126°07'32.6"E	RNAV 1	Bank angle 25°
010	TF	PC623	-	253(245.2)	5.0	-	-	@220	33°41'40.2"N 126°02'06.2"E	RNAV 1	Bank angle 25°
011	TF	PC624	-	236(228.2)	5.0	-	-	@220	33°38'19.9"N 125°57'38.2"E	RNAV 1	Bank angle 25°
012	TF	PC625	-	219(211.3)	5.0	-	-	@220	33°34'03.1"N 125°54'31.8"E	RNAV 1	Bank angle 25°
013	TF	PC626	-	202(194.3)	5.0	-	-	@220	33°29'11.9"N 125°53'02.9"E	RNAV 1	Bank angle 25°
014	TF	DAKPI	-	185(177.4)	5.0	-	-	@220	33°24'11.7"N 125°53'19.1"E	RNAV 1	Bank angle 25°
015	TF	PC628	-	168(160.5)	5.0	-	-	@220	33°19'28.4"N 125°55'18.5"E	RNAV 1	Bank angle 25°
016	TF	PIMIK	-	151(143.6)	5.0	-	@9 000	@220	33°15'26.4"N 125°58'50.7"E	RNAV 1	Bank angle 25°
017	TF	YUMIN	-	053(045.2)	17.0	-	+4 000	@210	33°27'25.7"N 126°13'15.5"E	RNAV 1	IAF

JEJU/Jeju Intl(RKPC)  
RWY 07  
HOLDING PROCEDURE

## AERONAUTICAL DATA TABULATION

## Standard Instrument Arrival Procedure Coding Tables

HOLDING PROCEDURE										
Holding Identification	Path Descriptor	Waypoint Identifier	Fly-over	Course/Track °M(°T)	Time (min)	Turn direction	Altitude (ft)	Speed (kt)	Coordinates	VPA/TCH
RNAV DOTOL 2P	HM	MANBA	Y	046(038.9)	1.5	L	-13 000 +9 000	-250	33°43'39.9"N 126°19'24.0"E	-
	HM	YUMIN	Y	126(118.3)	1.0	L	-7 000 +4 000	-230	33°27'25.7"N 126°13'15.5"E	-
RNAV UPPOS 1P	HM	MANBA	Y	046(038.9)	1.5	L	-13 000 +9 000	-250	33°43'39.9"N 126°19'24.0"E	-
	HM	YUMIN	Y	126(118.3)	1.0	L	-7 000 +4 000	-230	33°27'25.7"N 126°13'15.5"E	-
RNAV TAMNA 2P	HM	CJU	Y	269(261.9)	1.5	L	-FL 160 +12 000	-250	33°23'04.6"N 126°37'26.8"E	-
	HM	MANBA	Y	046(038.9)	1.5	L	-13 000 +9 000	-250	33°43'39.9"N 126°19'24.0"E	-
RNAV TOSAN 2P	HM	YUMIN	Y	126(118.3)	1.0	L	-7 000 +4 000	-230	33°27'25.7"N 126°13'15.5"E	-
	HM	CJU	Y	269(261.9)	1.5	L	-FL 160 +12 000	-250	33°23'04.6"N 126°37'26.8"E	-
RNAV SOSDO 2P	HM	MANBA	Y	046(038.9)	1.5	L	-13 000 +9 000	-250	33°43'39.9"N 126°19'24.0"E	-
	HM	YUMIN	Y	126(118.3)	1.0	L	-7 000 +4 000	-230	33°27'25.7"N 126°13'15.5"E	-
RNAV LIMDI 1P	HM	CJU	Y	269(261.9)	1.5	L	-FL 160 +12 000	-250	33°23'04.6"N 126°37'26.8"E	-
	HM	MANBA	Y	046(038.9)	1.5	L	-13 000 +9 000	-250	33°43'39.9"N 126°19'24.0"E	-
	HM	YUMIN	Y	126(118.3)	1.0	L	-7 000 +4 000	-230	33°27'25.7"N 126°13'15.5"E	-

Change : Information of standard instrument arrival procedure for RWY 07(RNAV MAKET 2P → RNAV UPPOS 1P).

**INTENTIONALLY**

**LEFT**

**BLANK**

STANDARD ARRIVAL CHART  
INSTRUMENT(STAR) - ICAO

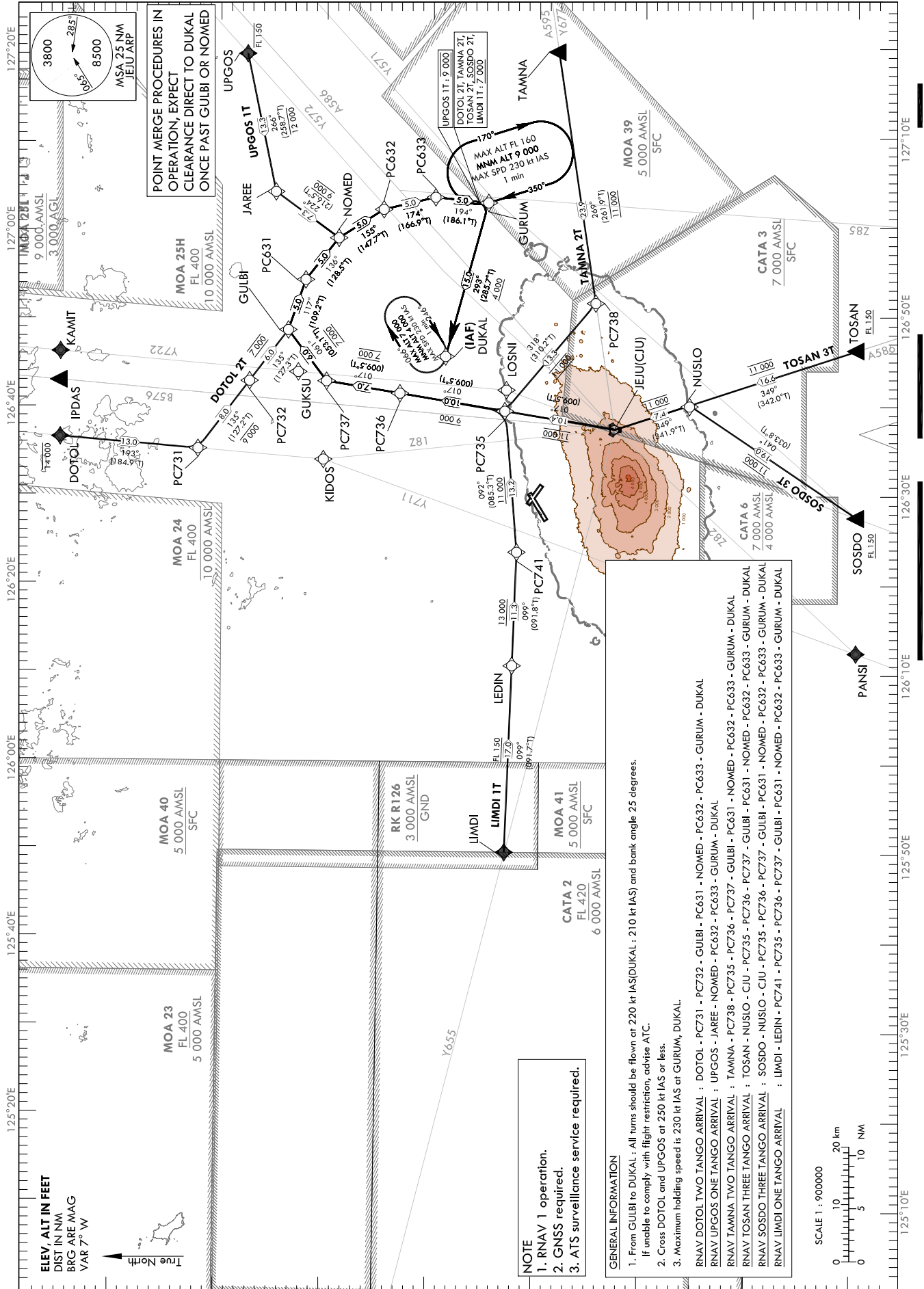
TRANSITION ALT 14 000  
TRANSITION LVL FL 140

JEJU APP 121.2  
124.05  
JEJU TWR 118.2  
118.55

JEJU/Jeju Intl(RKPC)

RWY 25  
RNAV DOTOL 2T, RNAV UPGOS 1T  
RNAV TAMNA 2T, RNAV TOSAN 3T  
RNAV SOSDO 3T, RNAV LIMDI 1T

Note : Arrival under ICAO Flight Procedures.



Change : Information of sequence for TWR FREQ, CJU VORTAC, Withdrawal of YDM VOR/DME, and Amended phrase.



## AERONAUTICAL DATA TABULATION

## Standard Instrument Arrival Procedure Coding Tables

## RNAV DOTOL 2T

Serial Number	Path Descriptor	Waypoint Identifier	Fly-over	Course/Track °M(°T)	Distance (NM)	Turn direction	Altitude (ft)	Speed (kt)	Coordinates	VPA/TCH	Navigation specification	Remarks
001	IF	DOTOL	-	-	-	-	-14 000	-250	34°15'15.4"N 126°36'36.6"E	-	RNAV 1	-
002	TF	PC731	-	193(184.9)	13.0	-	-	-	34°02'17.0"N 126°35'15.7"E	-	RNAV 1	-
003	TF	PC732	-	135(127.2)	8.0	-	-9 000	-	33°57'26.0"N 126°42'55.3"E	-	RNAV 1	-
004	TF	GULBI	-	135(127.3)	6.0	-	@7 000	@220	33°53'47.5"N 126°48'39.5"E	-	RNAV 1	Bank angle 25°
005	TF	PC631	-	117(109.2)	5.0	-	-	@220	33°52'08.3"N 126°54'19.7"E	-	RNAV 1	Bank angle 25°
006	TF	NOMED	-	136(128.5)	5.0	-	-	@220	33°49'01.2"N 126°59'01.5"E	-	RNAV 1	Bank angle 25°
007	TF	PC632	-	155(147.7)	5.0	-	-	@220	33°44'47.1"N 127°02'13.7"E	-	RNAV 1	Bank angle 25°
008	TF	PC633	-	174(166.9)	5.0	-	-	@220	33°39'54.3"N 127°03'35.0"E	-	RNAV 1	Bank angle 25°
009	TF	GURUM	-	194(186.1)	5.0	-	@7 000	@220	33°34'55.5"N 127°02'56.6"E	-	RNAV 1	Bank angle 25°
010	TF	DUKAL	-	293(285.7)	15.0	-	+4 000	@210	33°38'58.6"N 126°45'38.8"E	-	RNAV 1	IAF

## RNAV UPGOS 1T

Serial Number	Path Descriptor	Waypoint Identifier	Fly-over	Course/Track °M(°T)	Distance (NM)	Turn direction	Altitude (ft)	Speed (kt)	Coordinates	VPA/TCH	Navigation specification	Remarks
001	IF	UPGOS	-	-	-	-	-FL 150	-250	33°57'33.3"N 127°19'53.0"E	-	RNAV 1	-
002	TF	JAREE	-	266(258.7)	13.3	-	-12 000	-	33°54'56.0"N 127°04'15.7"E	-	RNAV 1	-
003	TF	NOMED	-	224(216.5)	7.3	-	@9 000	@220	33°49'01.2"N 126°59'01.5"E	-	RNAV 1	Bank angle 25°
004	TF	PC632	-	155(147.7)	5.0	-	-	@220	33°44'47.1"N 127°02'13.7"E	-	RNAV 1	Bank angle 25°
005	TF	PC633	-	174(166.9)	5.0	-	-	@220	33°39'54.3"N 127°03'35.0"E	-	RNAV 1	Bank angle 25°
006	TF	GURUM	-	194(186.1)	5.0	-	@9 000	@220	33°34'55.5"N 127°02'56.6"E	-	RNAV 1	Bank angle 25°
007	TF	DUKAL	-	293(285.7)	15.0	-	+4 000	@210	33°38'58.6"N 126°45'38.8"E	-	RNAV 1	IAF



JEJU/Jeju Intl(RKPC)  
RWY 25

RNAV TAMNA 2T, RNAV TOSAN 3T

## AERONAUTICAL DATA TABULATION

Standard Instrument Arrival Procedure Coding Tables

## RNAV TAMNA 2T

Serial Number	Path Descriptor	Waypoint Identifier	Fly-over	Course/Track °M(T)	Distance (NM)	Turn direction	Altitude (ft)	Speed (kt)	Coordinates	VPA/RDH	Navigation specification	Remarks
001	IF	TAMNA	-	-	-	-	-	-	33°28'15.5"N 127°19'53.0"E	-	RNAV 1	-
002	TF	PC738	-	269(261.9)	23.9	-	@11 000	-	33°24'50.2"N 126°51'37.6"E	-	RNAV 1	-
003	TF	PC735	-	318(310.2)	13.3	-	@11 000	-	33°33'23.5"N 126°39'30.8"E	-	RNAV 1	-
004	TF	PC736	-	017(009.5)	10.0	-	-9 000	-	33°43'16.3"N 126°41'29.9"E	-	RNAV 1	-
005	TF	PC737	-	017(009.5)	7.0	-	@7 000	-	33°50'11.3"N 126°42'53.5"E	-	RNAV 1	-
006	TF	GULBI	-	061(053.1)	6.0	-	-	@220	33°53'47.5"N 126°48'39.5"E	-	RNAV 1	Bank angle 25°
007	TF	PC631	-	117(109.2)	5.0	-	-	@220	33°52'08.3"N 126°54'19.7"E	-	RNAV 1	Bank angle 25°
008	TF	NOMED	-	136(128.5)	5.0	-	-	@220	33°49'01.2"N 126°59'01.5"E	-	RNAV 1	Bank angle 25°
009	TF	PC632	-	155(147.7)	5.0	-	-	@220	33°44'47.1"N 127°02'13.7"E	-	RNAV 1	Bank angle 25°
010	TF	PC633	-	174(166.9)	5.0	-	-	@220	33°39'54.3"N 127°03'35.0"E	-	RNAV 1	Bank angle 25°
011	TF	GURUM	-	194(186.1)	5.0	-	@7 000	@220	33°34'55.5"N 127°02'56.6"E	-	RNAV 1	Bank angle 25°
012	TF	DUKAL	-	293(285.7)	15.0	-	+4 000	@210	33°38'58.6"N 126°45'38.8"E	-	RNAV 1	IAF

## RNAV TOSAN 3T

Serial Number	Path Descriptor	Waypoint Identifier	Fly-over	Course/Track °M(T)	Distance (NM)	Turn direction	Altitude (ft)	Speed (kt)	Coordinates	VPA/RDH	Navigation specification	Remarks
001	IF	TOSAN	-	-	-	-	+FL 150	-	33°00'12.0"N 126°46'18.7"E	-	RNAV 1	-
002	TF	NUSLO	-	349(342.0)	16.6	-	@11 000	-	33°16'00.2"N 126°40'11.8"E	-	RNAV 1	-
003	TF	CJU	-	349(341.9)	7.4	-	@11 000	-	33°23'04.6"N 126°37'26.8"E	-	RNAV 1	-
004	TF	PC735	-	017(009.5)	10.4	-	@11 000	-	33°33'23.5"N 126°39'30.8"E	-	RNAV 1	-
005	TF	PC736	-	017(009.5)	10.0	-	-9 000	-	33°43'16.3"N 126°41'29.9"E	-	RNAV 1	-
006	TF	PC737	-	017(009.5)	7.0	-	@7 000	-	33°50'11.3"N 126°42'53.5"E	-	RNAV 1	-
007	TF	GULBI	-	061(053.1)	6.0	-	-	@220	33°53'47.5"N 126°48'39.5"E	-	RNAV 1	Bank angle 25°
008	TF	PC631	-	117(109.2)	5.0	-	-	@220	33°52'08.3"N 126°54'19.7"E	-	RNAV 1	Bank angle 25°
009	TF	NOMED	-	136(128.5)	5.0	-	-	@220	33°49'01.2"N 126°59'01.5"E	-	RNAV 1	Bank angle 25°
010	TF	PC632	-	155(147.7)	5.0	-	-	@220	33°44'47.1"N 127°02'13.7"E	-	RNAV 1	Bank angle 25°
011	TF	PC633	-	174(166.9)	5.0	-	-	@220	33°39'54.3"N 127°03'35.0"E	-	RNAV 1	Bank angle 25°
012	TF	GURUM	-	194(186.1)	5.0	-	@7 000	@220	33°34'55.5"N 127°02'56.6"E	-	RNAV 1	Bank angle 25°
013	TF	DUKAL	-	293(285.7)	15.0	-	+4 000	@210	33°38'58.6"N 126°45'38.8"E	-	RNAV 1	IAF

Change : Information of standard instrument arrival procedure for RWY 25(RNAV TOSAN 2T → RNAV TOSAN 3T).

JEJU/Jeju Intl(RKPC)  
RWY 25

RNAV SOSDO 3T, RNAV LIMDI 1T

## AERONAUTICAL DATA TABULATION

Standard Instrument Arrival Procedure Coding Tables

## RNAV SOSDO 3T

Serial Number	Path Descriptor	Waypoint Identifier	Fly-over	Course/Track °M(°T)	Distance (NM)	Turn direction	Altitude (ft)	Speed (kt)	Coordinates	VPA/RDH	Navigation specification	Remarks
001	IF	SOSDO	-	-	-	-	+FL 150	-	33°00'12.0"N 126°27'35.0"E	-	RNAV 1	-
002	TF	NUSLO	-	041(033.8)	19.0	-	@11 000	-	33°16'00.2"N 126°40'11.8"E	-	RNAV 1	-
003	TF	CJU	-	349(341.9)	7.4	-	@11 000	-	33°23'04.6"N 126°37'26.8"E	-	RNAV 1	-
004	TF	PC735	-	017(009.5)	10.4	-	@11 000	-	33°33'23.5"N 126°39'30.8"E	-	RNAV 1	-
005	TF	PC736	-	017(009.5)	10.0	-	-9 000	-	33°43'16.3"N 126°41'29.9"E	-	RNAV 1	-
006	TF	PC737	-	017(009.5)	7.0	-	@7 000	-	33°50'11.3"N 126°42'53.5"E	-	RNAV 1	-
007	TF	GULBI	-	061(053.1)	6.0	-	-	@220	33°53'47.5"N 126°48'39.5"E	-	RNAV 1	Bank angle 25°
008	TF	PC631	-	117(109.2)	5.0	-	-	@220	33°52'08.3"N 126°54'19.7"E	-	RNAV 1	Bank angle 25°
009	TF	NOMED	-	136(128.5)	5.0	-	-	@220	33°49'01.2"N 126°59'01.5"E	-	RNAV 1	Bank angle 25°
010	TF	PC632	-	155(147.7)	5.0	-	-	@220	33°44'47.1"N 127°02'13.7"E	-	RNAV 1	Bank angle 25°
011	TF	PC633	-	174(166.9)	5.0	-	-	@220	33°39'54.3"N 127°03'35.0"E	-	RNAV 1	Bank angle 25°
012	TF	GURUM	-	194(186.1)	5.0	-	@7 000	@220	33°34'55.5"N 127°02'56.6"E	-	RNAV 1	Bank angle 25°
013	TF	DUKAL	-	293(285.7)	15.0	-	+4 000	@210	33°38'58.6"N 126°45'38.8"E	-	RNAV 1	IAF

## RNAV LIMDI 1T

Serial Number	Path Descriptor	Waypoint Identifier	Fly-over	Course/Track °M(°T)	Distance (NM)	Turn direction	Altitude (ft)	Speed (kt)	Coordinates	VPA/RDH	Navigation specification	Remarks
001	IF	LIMDI	-	-	-	-	-	-	33°33'13.3"N 125°49'53.0"E	-	RNAV 1	-
002	TF	LEDIN	-	099(091.7)	17.0	-	+FL 150	-	33°32'42.1"N 126°10'14.9"E	-	RNAV 1	-
003	TF	PC741	-	099(091.8)	11.3	-	+13 000	-	33°32'19.6"N 126°23'42.6"E	-	RNAV 1	-
004	TF	PC735	-	092(085.3)	13.2	-	+11 000	-	33°33'23.5"N 126°39'30.8"E	-	RNAV 1	-
005	TF	PC736	-	017(009.5)	10.0	-	-9 000	-	33°43'16.3"N 126°41'29.9"E	-	RNAV 1	-
006	TF	PC737	-	017(009.5)	7.0	-	@7 000	-	33°50'11.3"N 126°42'53.5"E	-	RNAV 1	-
007	TF	GULBI	-	061(053.1)	6.0	-	-	@220	33°53'47.5"N 126°48'39.5"E	-	RNAV 1	Bank angle 25°
008	TF	PC631	-	117(109.2)	5.0	-	-	@220	33°52'08.3"N 126°54'19.7"E	-	RNAV 1	Bank angle 25°
009	TF	NOMED	-	136(128.5)	5.0	-	-	@220	33°49'01.2"N 126°59'01.5"E	-	RNAV 1	Bank angle 25°
010	TF	PC632	-	155(147.7)	5.0	-	-	@220	33°44'47.1"N 127°02'13.7"E	-	RNAV 1	Bank angle 25°
011	TF	PC633	-	174(166.9)	5.0	-	-	@220	33°39'54.3"N 127°03'35.0"E	-	RNAV 1	Bank angle 25°
012	TF	GURUM	-	194(186.1)	5.0	-	@7 000	@220	33°34'55.5"N 127°02'56.6"E	-	RNAV 1	Bank angle 25°
013	TF	DUKAL	-	293(285.7)	15.0	-	+4 000	@210	33°38'58.6"N 126°45'38.8"E	-	RNAV 1	IAF

Change : Information of standard instrument arrival procedure for RWY 25(RNAV SOSDO 2T → RNAV SOSDO 3T).

JEJU/Jeju Intl(RKPC)  
RWY 25  
HOLDING PROCEDURE

## AERONAUTICAL DATA TABULATION

## Standard Instrument Arrival Procedure Coding Tables

HOLDING PROCEDURE	Holding Identification	Path Descriptor	Waypoint Identifier	Fly-over	Course/Track °M(°T)	Time (min)	Turn direction	Altitude (ft)	Speed (kt)	Coordinates	VPA/RDH	Navigation specification	Remarks
■	RNAV DOTOL 2T	HM	GURUM	Y	350 (342.8)	1.0	R	-FL 160 +9 000	-230	33°34'55.5"N 127°02'56.6"E	-	RNAV 1	-
		HM	DUKAL	Y	246 (238.6)	1.0	R	-7 000 +4 000	-230	33°38'58.6"N 126°45'38.8"E	-	RNAV 1	-
		HM	GURUM	Y	350 (342.8)	1.0	R	-FL 160 +9 000	-230	33°34'55.5"N 127°02'56.6"E	-	RNAV 1	-
■	RNAV UPGOS 1T	HM	DUKAL	Y	246 (238.6)	1.0	R	-7 000 +4 000	-230	33°38'58.6"N 126°45'38.8"E	-	RNAV 1	-
		HM	GURUM	Y	350 (342.8)	1.0	R	-FL 160 +9 000	-230	33°34'55.5"N 127°02'56.6"E	-	RNAV 1	-
		HM	DUKAL	Y	246 (238.6)	1.0	R	-7 000 +4 000	-230	33°38'58.6"N 126°45'38.8"E	-	RNAV 1	-
■	RNAV TOSAN 2T	HM	GURUM	Y	350 (342.8)	1.0	R	-FL 160 +9 000	-230	33°34'55.5"N 127°02'56.6"E	-	RNAV 1	-
		HM	DUKAL	Y	246 (238.6)	1.0	R	-7 000 +4 000	-230	33°38'58.6"N 126°45'38.8"E	-	RNAV 1	-
		HM	GURUM	Y	350 (342.8)	1.0	R	-FL 160 +9 000	-230	33°34'55.5"N 127°02'56.6"E	-	RNAV 1	-
■	RNAV TOSAN 3T	HM	GURUM	Y	350 (342.8)	1.0	R	-FL 160 +9 000	-230	33°34'55.5"N 127°02'56.6"E	-	RNAV 1	-
		HM	DUKAL	Y	246 (238.6)	1.0	R	-7 000 +4 000	-230	33°38'58.6"N 126°45'38.8"E	-	RNAV 1	-
		HM	GURUM	Y	350 (342.8)	1.0	R	-FL 160 +9 000	-230	33°34'55.5"N 127°02'56.6"E	-	RNAV 1	-
■	RNAV SOSDO 3T	HM	DUKAL	Y	246 (238.6)	1.0	R	-7 000 +4 000	-230	33°38'58.6"N 126°45'38.8"E	-	RNAV 1	-
		HM	GURUM	Y	350 (342.8)	1.0	R	-FL 160 +9 000	-230	33°34'55.5"N 127°02'56.6"E	-	RNAV 1	-
		HM	DUKAL	Y	246 (238.6)	1.0	R	-7 000 +4 000	-230	33°38'58.6"N 126°45'38.8"E	-	RNAV 1	-
■	RNAV LIMDI 1T	HM	GURUM	Y	350 (342.8)	1.0	R	-FL 160 +9 000	-230	33°34'55.5"N 127°02'56.6"E	-	RNAV 1	-
		HM	DUKAL	Y	246 (238.6)	1.0	R	-7 000 +4 000	-230	33°38'58.6"N 126°45'38.8"E	-	RNAV 1	-
		HM	GURUM	Y	350 (342.8)	1.0	R	-FL 160 +9 000	-230	33°34'55.5"N 127°02'56.6"E	-	RNAV 1	-

Change : Information of standard instrument arrival procedure for RWY 25(RNAV MAKET 2T → RNAV UPGOS 1T, TOSAN 2T → 3T, SOSDO 2T → 3T).

**INTENTIONALLY**

**LEFT**

**BLANK**